



Application

Aluminum body and rotor : Flow measurements of kerosene, Gasoline, diesel, light oil, heavy oil
S.S. body and rotor : Flow measurements of Pharmaceutical drug, food oil, and all application

Technical Data Sheet

Material of construction:

Enclosure : Aluminum anodize/S.S-304/S.S-316
Rotor : Aluminum anodize/S.S-316/PPS
O-ring : NBR/Viton (High Pressure)
Shaft : Hard Stainless Steel-316

Accuracy : $\pm 1\%$ RS /0.15% FSD
(std. installation position)

Repeatability : 0.1%
Max working pressure : 21 Bar (Regular)

(For Aluminum body) : 40 Bar (Optional)

Max working pressure : 70 Bar (Optional)
(For S.S. body) : 200 Bar (Special on Request)
: above 200 bar please contact company

Fluid & Ambient temp. : - 40 to 120°C
: (above 120 °C please contact company)

Fluid Viscosity : 5 Cps - 2000 Cps

Power voltage : 5 - 24V DC / Battery operated

Output signal : NPN open conector : 5 -24 vdc / Reed switch

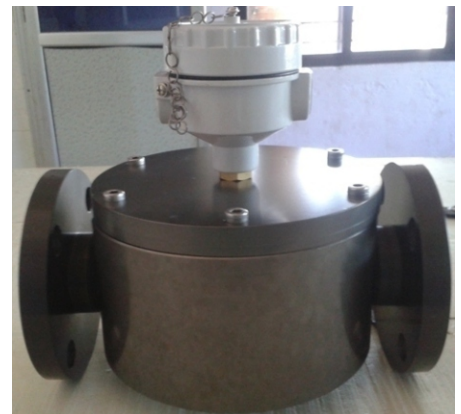
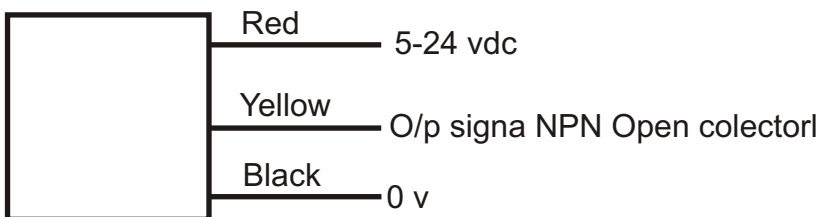
Output

High electric level : less than 4.5 VDC(input voltage 5 VDC)
low electric level : higher than 0.5 VDC(input voltage 5 VDC)
Connection : Thread (M/F) or flange

Fuel flow Sensor Technical Data:

Model no	Line size	Range	Liter/Pulse
MK-DOGFM-004	4mm 1/4" Thread	0.7~60L/H	0.000416 L/H
MK-DOGFM-006	6mm 1/4" Thread	5~150L/H	0.000661 L/H
MK-DOGFM-008	8 mm 3/8" Thread	20~300L/H	0.0025 L/H
MK-DOGFM-012	12 mm 1/2" Thread	50~1200L/H	0.0025 L/H
MK-DOGFM-020	20 mm 3/4" Thread	150~2,000L/H	0.0154 L/H
MK-DOGFM-025	25 mm 1" Thread	200~4,000L/H	0.0256 L/H
MK-DOGFM-040	40 mm 1.5" Flange	500~10,000L/H	0.086 L/H
MK-DOGFM-050	50 mm 2" Flange	600~20,000L/H	0.19 L/H
MK-DOGFM-080	80 mm 3" Flange	1,000~50,000L/H	0.54 L/H
MK-DOGFM-100	100 mm 4" Flange	2,000~100,000L/H	1.0 L/H
MK-DOGFM-150	150 mm 4" Flange	5,000~150,000L/H	3.2 L/H

Electric Connection



Calibration

- *Calibrated each flow sensor with three pressure point : 0.5, 4 and 25 bar ,
- *all pressure calculate pulse/liter at : 25%, 50%, 75% and 100% flow rate
- *Calibrated with pure diesel

