

The strainer is a filtering element incorporated in the pipe line. It is called a 'Y' Type, 'Basket' Type or 'T' Type strainer because of its shape. Inside the strainer is a mesh, which blocks any suspended impurities that the fluid has and is collected in the mesh. During maintenance the mesh can be removed and cleaned of the impurities.

**Design Conforms to ASME B16.10 & ASTM Section VIII-Div.2**

**Specification :**

- Material of wetted parts : CI/ASTM A216 Gr WCB/ASTM351CF 8/ASTM351CF8M/MS/CS/SS304/SS 304L/SS316/SS316 L/ PP & HDPE
- Filter elements : SS316/SS304/BRASS • Mesh Size: 5 to 500 microns • Design Temperature: Up to 200°C
- Design Pressure: Up to 40 Kg /cm<sup>2</sup> • Line size : Up to 800 NB depending upon the type
- Connection : Flanged to ASA/BS/DIN/JIS/ Screwed BSP/NPT/Butt Weld

**'Y' Type Strainer Flanged End  
Design Conforms to ASME B16.10**



**Product Code : YST-F**

**'Y' Type Strainer Screwed End  
Design Conforms to ASME B16.10**



**Product Code : YST-S**

**Basket Type Strainer  
Design Conforms to ASME Section VIII-Div.2**



**Product Code : BST-F**

**Tee Type Strainer**



**Product Code : TF**

**Duplex Filter /Strainer**



**Product Code : DST**

**Conical Strainer**



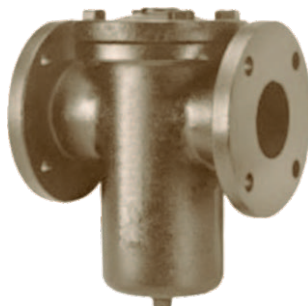
**Product Code : CST**

**Mud Box Angular  
Design Conforms to DIN 87151-1.**



**Product Code : MDA**

**Mud Box Straight  
Design Conforms to DIN 87151-1.**



**Product Code : MDS**

**Suction Strainer**



**Product Code : SSTR**